

AQUATEC®

Ocean Ergo

ACCESSORIES AND ADJUSTMENTS



Yes, you can.®

Introduction

This useful guide explains how the Ocean Ergo Family can be customised to suit a wide range of physical conditions by making simple adjustments or by adding some easy to fit, off-the-shelf accessories.

Meet the Ocean Ergo Family...



Ocean 24" Ergo XL ▲

Plus-size
self-propelling
model

Ocean Ergo XL ▲

Plus-size
attendant
propelled
model

Ocean VIP Ergo ▲

Tilt-in-space
model

Ocean Ergo ▲

Attendant
propelled
model

Ocean Dual VIP Ergo ▲

Tilt-in-space
model with
backrest recline

Ocean 24" Ergo ▲

Self-propelling
model

Accessories

Cross compatibility:

- **Ocean Ergo**
- **Ocean VIP Ergo / Dual VIP Ergo**
- **Ocean**
- **Ocean VIP / Dual VIP**

Seating and backrests



► Standard soft seat

With key shaped cut out.



► Soft seat insert

Can be used with or without the soft seat when commode function is not required.



► Small soft seat

With small, oval opening for smaller and young adults.



► Small soft seat insert

Can be used with the small soft seat when the commode function is not required.

N.B All seats are shaped in line with the new ergonomic seat plate



► Variable soft seat

Hygiene cut out can be positioned in all 4 directions for flexible access.



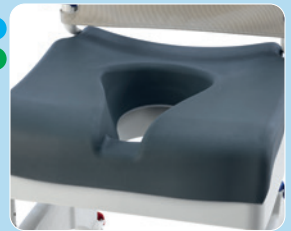
► Universal soft seat

Comfortable, closed seat surface.



► XL back

Increases the width between the armrests by 80mm. Can be retrofitted to standard Ocean Ergo models.



► Ergonomic soft seat

Extra soft, visco elastic foam with textured surface for pelvic stability and pressure redistribution.



► Wider XL armrests

Increases the distance between the armrests by 40 mm on each side.



► Soft backrest cushion

For additional stability and comfort. Will also benefit smaller users and young adults.



► Comfort backrest

For additional comfort and easy cleaning.

*Standard on the Ocean Dual VIP Ergo



► Solid plastic backrest

Offers a stable upright position and is easy to clean.

Positioning



► Lateral supports

For safe positioning of the trunk. Width and height adjustable – also for small users and young adults.



► Calf support with foot rest

Padded, both height and angle adjustable with additional foot support.



Ergonomic headrest holder

► Safe and comfortable with various adjustment positions (*pad not included*).



Ergonomic headrest/neckrest

► Offers exceptional management of the head position. Neckrest shown.



► Shortened leg rests

Can be used to support abnormal posture or smaller/young adults.



► Calf Support

Provides comfort for lower limbs.

Safety



► Safety bar

For additional safety and reassurance.

*XL version also available



► Safety belts Ocean

For safe positioning. Individually adjustable, high load capacity and easy to assemble. Machine washable.



► Armrest lock

Locks armrest into the lower or higher position.



► Calf and amputee support

Padded, both height and angle adjustable. For use with the standard plastic seat, standard soft seat and small soft seat. (Amputee support shown).



► Front and rear anti-tippers

For additional safety.



► Front anti-tippers

For additional safety on the Ocean Ergo

Toileting



► Splash guard

Clips on easily for use with the standard plastic seat, standard soft seat and small soft seat. May also help as a pommel.



► Toilet pan

Ergonomic handle allows removal of the pan from holder easily

Capacity scale inside the pan

Lid holder to ensure pan and lid stay together.



► Ocean Skirt

Provides a protective barrier between the commode aperture and automatic toilet systems.

Adjustments

All Ocean Ergo models can be adjusted to suit a range of body sizes.

Armrests

Ergonomic, swing away armrests can be adjusted to different heights. Can be adjusted between 215 - 290 mm above the seat plate.

Footrests

Height adjustable, swing away and detachable footrests

No tools required.

Seat Height

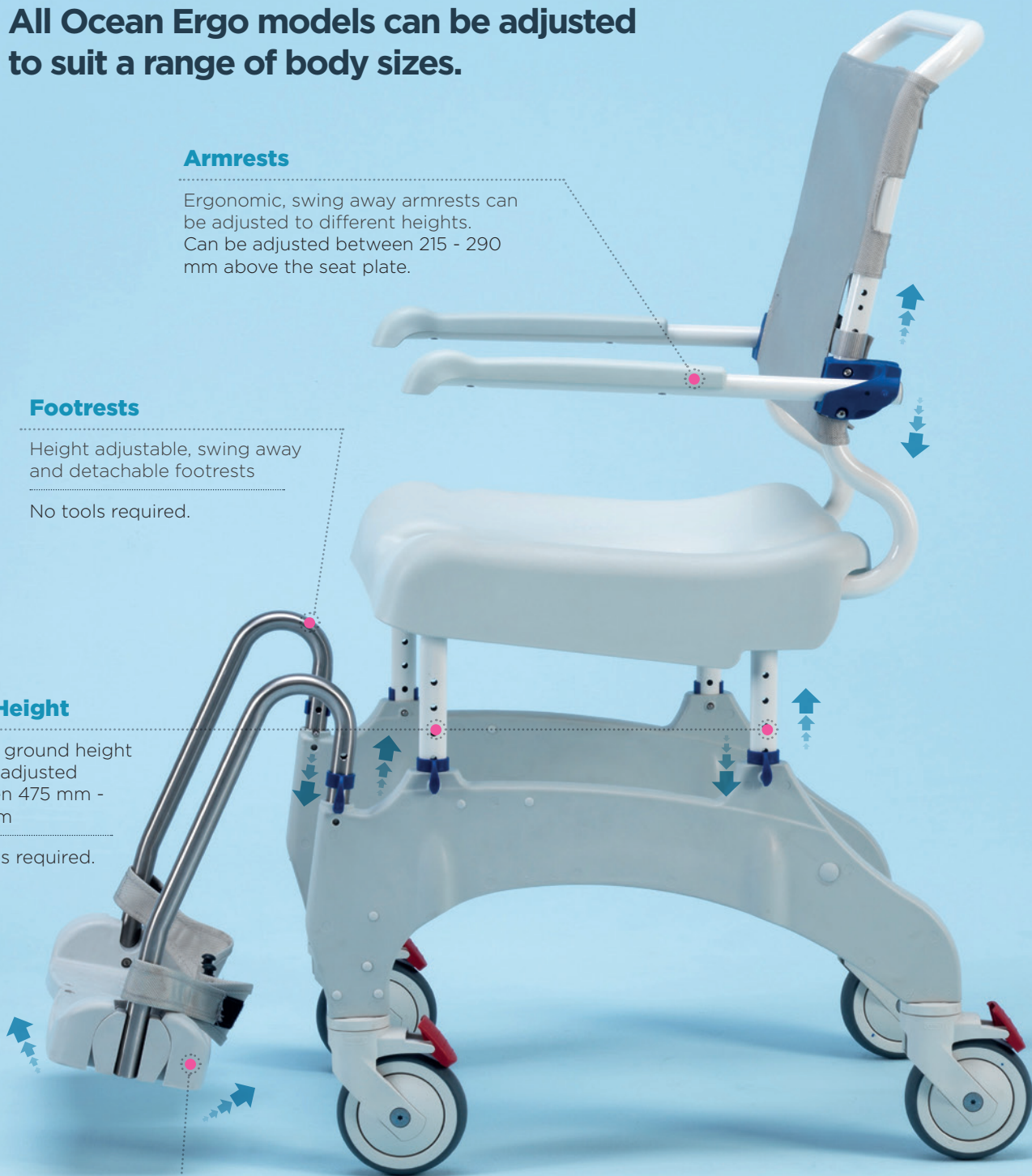
Seat to ground height can be adjusted between 475 mm - 600 mm

No tools required.

Footplates

Angle adjustable, flip-up and textured footplates with heel loops

No tools required.



Ocean Ergo Compatibility

- ✓ - Compatible
- ✗ - Not compatible
- - Included as standard

Many accessories are also compatible across the Ocean and new Ocean Ergo ranges.*

	Product code	Ocean Ergo	Ocean 24" Ergo	Ocean Ergo XL	Ocean 24" Ergo XL	Ocean VIP Ergo	Ocean Dual VIP Ergo
Standard soft seat	AP1603142	✓	✓	✓	✓	✓	✓
Soft seat insert	AP1603143	✓	✓	✓	✓	✓	✓
Small soft seat	AP1603145	✓	✓	✓	✓	✓	✓
Small soft seat insert	AP1603152	✓	✓	✓	✓	✓	✓
Splash guard	AP1603155	✓	✓	✓	✓	✓	✓
Universal soft seat	AP1603154	✓	✓	✓	✓	✓	✓
Ergonomic special soft seat	AP60121311	✓	✓	✓	✓	✓	✓
Variable soft seat	1544469	✓	✓	✓	✓	✓	✓
Safety bar	10167-10	✓	✓	✗	✗	✓	✓
Safety bar XL	1470078	✗	✗	✓	✓	✗	✗
Chest belt	1470081	✓	✓	✓	✓	✓	✓
Pelvic belt	1470082	✓	✓	✓	✓	✓	✓
Armrest locking device	1470077	✓	✓	✓	✓	✓	✓
XL back	AP1604015	✓	✓	-	-	✗	✗
Fixed backrest	1575299	✓	✓	✗	✗	✗	✗
Soft backrest cushion	1558769	✓	✓	✓	✓	✓	✓
Wider XL armrests	1470086	✓	✓	✗	✗	✓	✓
24" wheels (set)	16379	✓	-	✗	-	✗	✗
Calf and amputee support right	AP1643573	✓	✓	✓	✓	✓	✓
Calf and amputee support left	AP1643574	✓	✓	✓	✓	✓	✓
Calf support with foot support right	AP1643543	✓	✓	✓	✓	✓	✓
Calf support with foot support left	AP1643572	✓	✓	✓	✓	✓	✓
Lateral	1535077	✓	✓	✓	✓	✓	✓
Ergonomic headrest holder	1531613	✗	✗	✗	✗	✓	✓
Ergonomic headrest	1531465	✗	✗	✗	✗	✓	✓
Ergonomic neckrest	1531608	✗	✗	✗	✗	✓	✓
Toilet pan	10230	✓	✓	✓	✓	✓	✓
Toilet pan holder	AP1602078	✓	✓	✓	✓	✓	✓
Front and back anti-tipper Ergo VIP models	AP1603992	✗	✗	✗	✗	✓	✓
Front anti-tipper Ocean Ergo models	AP1601986	✓	✓	✓	✓	✗	✗
Comfort soft backrest VIP Ergo models	AP1603606	✗	✗	✗	✗	✓	✓
Comfort soft backrest Ocean Ergo models	AP1604136	✓	✓	✗	✗	✗	✗
Comfort soft backrest Ocean Ergo XL models	AP1604016	✗	✗	✓	✓	✗	✗

* For more information on cross compatibility across the Ocean ranges, please contact safepatienthandling@invacare.com.

Alternatively, you can order the **Ocean Ergo Accessory Compatibility Matrix** from ordersuk@invacare.com on order code **1630873**.

Invacare Limited
Pencoed Technology Park - Pencoed
Bridgend CF35 5AQ - United Kingdom
Tel: +44 1 656 776 222
Fax: +44 1656 776 220
E-mail: uk@invacare.com
Sales Order E-mail: ordersuk@invacare.com
www.invacare.co.uk

Invacare Ireland Ltd
Unit 5 - Seatown Business Campus
Seatown Road - SWORDS
County Dublin - Ireland
Tel. +353 1 8107084
Fax +353 1 8107085
Email: Ireland@invacare.com
www.invacare.ie



Safe
Patient
Handling